

DATE: 17 February 2022
DESIGNER: EDC
PROJECT No: 16020
PROJECT NAME: CREAMFIELDS SHD SITE LIGHTING



CREAMFIELDS SHD SITE LIGHTING

Outdoor Lighting Report

PREPARED BY: EDC - Mechanical & Electrical Consulting Engineers
Engineer: Thomas Taylor
Email: ttaylor@edcengineers.com
Cork Office Tel: +353 (0)21 4280476
Dublin Office Tel: +353 (0)1 5313693
London Office Tel: +44 (0)203 0040062
www.edcengineers.com

Layout Report

General Data

Dimensions in Metres Angles in Degrees

Calculation Grids

ID	Grid Name	X	Y	X' Length	Y' Length	X' Spacing	Y' Spacing
1	Overall Site	63.54	31.66	389.89	222.55	1.61	1.71
2	Southern Quarter	97.79	147.71	96.52	102.24	1.48	1.48
3	Mid Southern Quarter	188.07	127.65	96.54	122.44	1.49	1.49
4	Mid Northern Quarter	277.82	107.14	96.54	122.44	1.49	1.49
5	Northern Quarter	353.61	97.19	59.04	122.41	1.48	1.49

Luminaires



Luminaire A Data

Supplier	Cree Lighting
Type	XSPME - B - Type 3SH - 31W 4K
Lamp(s)	3MD-SA1400 M 31W 4K
LampFlux(klm)/Colour	4.67 4000/70
File Name	XSPME023SHB40K_31W-PL12371-012A.LDT
Maintenance Factor	0.85
Imax70,80,90(cd/klm)	334.5, 193.4, 0.0
No. in Project	19



Luminaire B Data

Supplier	Cree Lighting
Type	XSPME - B - Type 2SH - 26W 4K
Lamp(s)	3MD-SA1400 M 26W 4K
LampFlux(klm)/Colour	4.00 4000/70
File Name	XSPME022SHB40K_26W-PL12371-011A.LDT
Maintenance Factor	0.85
Imax70,80,90(cd/klm)	389.0, 13.6, 0.0
No. in Project	1

Luminaire C Data

Supplier	
Type	Urban Minimal Type ABS 4K 30W
Lamp(s)	140 luxeon3030 30W 4
LampFlux(klm)/Colour	4.66 4000/70
File Name	UMNA-2-ABS-5L-407-R01201_30W.LDT
Maintenance Factor	0.85
Imax70,80,90(cd/klm)	391.0, 45.5, 0.0
No. in Project	25

Luminaire D Data

Supplier	
Type	Urban Minimal Type 150 4K 25W
Lamp(s)	140 luxeon3030 25W 4
LampFlux(klm)/Colour	3.93 4000/70
File Name	UMNA-2-150-5L-407-R01203_25W.LDT
Maintenance Factor	0.85
Imax70,80,90(cd/klm)	406.5, 107.4, 0.0
No. in Project	5

Luminaire E Data

Supplier	
Type	PATHWAY, PR OPTIC, 18 LED 4000
Lamp(s)	18 LED 350mA 4K
LampFlux(klm)/Colour	2.34 4000/70
File Name	LXHPR018E-PL5698-001_PR.LDT
Maintenance Factor	0.85
Imax70,80,90(cd/klm)	345.6, 84.4, 0.0
No. in Project	41

Layout

ID /Mast	Type	X	Y	Height	Angle	Tilt	Cant	Out-reach	Target X	Target Y	Target Z
1	A	246.85	129.25	6.00	350.00	5.00	0.00	0.00			
2	A	249.39	160.42	6.00	343.00	5.00	0.00	0.00			
3	A	255.33	188.91	6.00	351.00	5.00	0.00	0.00			
4	A	266.39	177.05	6.00	170.00	5.00	0.00	0.00			
5	A	258.56	205.26	6.00	348.00	5.00	0.00	0.00			
6	A	276.77	214.79	6.00	78.00	5.00	0.00	0.00			
7	A	314.07	208.31	6.00	82.00	5.00	0.00	0.00			
8	A	334.49	204.60	6.00	80.00	5.00	0.00	0.00			
9	A	350.27	212.55	6.00	261.00	5.00	0.00	0.00			
10	A	387.12	211.50	6.00	258.00	5.00	0.00	0.00			
11	E	156.90	199.55	2.40	80.00	5.00	0.00	0.00			
12	A	401.28	202.09	6.00	226.00	5.00	0.00	0.00			
13	B	338.13	191.34	6.00	347.00	5.00	0.00	0.00			
14	A	232.36	216.98	6.00	93.00	5.00	0.00	0.00			
15	A	212.49	215.69	6.00	96.00	5.00	0.00	0.00			
16	C	195.64	222.84	6.00	273.00	5.00	0.00	0.00			
17	D	191.06	195.55	5.00	168.00	5.00	0.00	0.00			
18	D	184.58	174.92	5.00	172.00	5.00	0.00	0.00			
19	D	182.55	156.09	5.00	166.00	5.00	0.00	0.00			
20	D	178.95	139.48	5.00	166.00	5.00	0.00	0.00			
21	E	171.15	200.26	2.40	261.00	5.00	0.00	0.00			
22	E	162.13	193.30	2.40	166.00	5.00	0.00	0.00			
23	E	145.09	199.09	2.40	97.00	5.00	0.00	0.00			
24	E	127.34	198.34	2.40	90.00	5.00	0.00	0.00			
25	E	117.57	174.87	2.40	259.00	5.00	0.00	0.00			
26	E	110.52	162.08	2.40	166.00	5.00	0.00	0.00			
27	E	108.88	149.57	2.40	75.00	5.00	0.00	0.00			
28	E	121.11	144.98	2.40	78.00	5.00	0.00	0.00			
29	E	136.56	142.71	2.40	74.00	5.00	0.00	0.00			
30	E	149.66	140.10	2.40	78.00	5.00	0.00	0.00			
31	E	186.56	130.61	2.40	76.00	5.00	0.00	0.00			
32	E	207.49	127.05	2.40	81.00	5.00	0.00	0.00			
33	E	219.65	124.61	2.40	81.00	5.00	0.00	0.00			
34	E	231.71	122.04	2.40	81.00	5.00	0.00	0.00			
35	E	127.62	173.69	2.40	259.00	5.00	0.00	0.00			
36	E	192.71	189.41	2.40	276.00	5.00	0.00	0.00			

Layout Continued

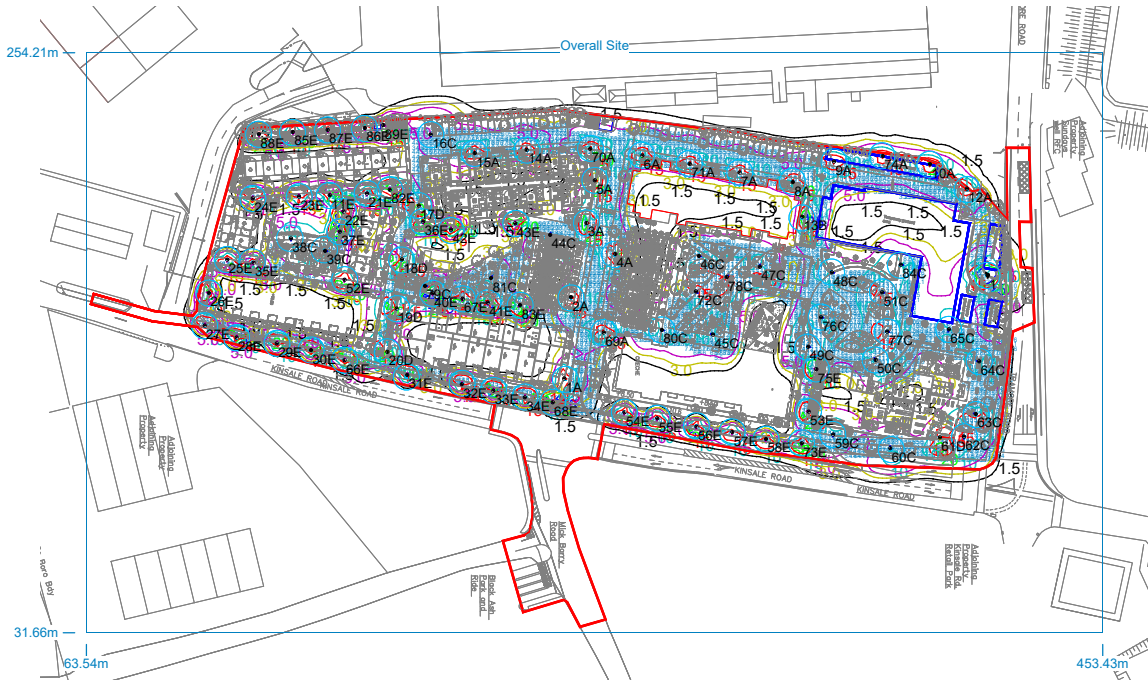
ID /Mast	Type	X	Y	Height	Angle	Tilt	Cant	Out-reach	Target X	Target Y	Target Z
37	E	160.72	185.54	2.40	169.00	5.00	0.00	0.00			
38	C	142.02	182.98	5.00	271.00	5.00	0.00	0.00			
39	C	155.07	178.21	5.00	349.00	5.00	0.00	0.00			
40	E	196.39	161.94	2.40	260.00	5.00	0.00	0.00			
41	E	217.45	158.35	2.40	260.00	5.00	0.00	0.00			
42	E	203.41	186.39	2.40	91.00	5.00	0.00	0.00			
43	E	228.02	188.75	2.40	90.00	5.00	0.00	0.00			
44	C	241.41	184.31	5.00	79.00	5.00	0.00	0.00			
45	C	303.88	146.17	5.00	171.00	5.00	0.00	0.00			
46	C	298.45	176.22	5.00	348.00	5.00	0.00	0.00			
47	C	321.84	172.13	5.00	83.00	5.00	0.00	0.00			
48	C	349.46	169.96	5.00	348.00	5.00	0.00	0.00			
49	C	340.39	141.39	5.00	348.00	5.00	0.00	0.00			
50	C	366.26	136.36	5.00	121.00	5.00	0.00	0.00			
51	C	368.77	162.32	5.00	348.00	5.00	0.00	0.00			
52	E	162.59	167.14	2.40	259.00	5.00	0.00	0.00			
53	E	340.57	116.56	2.40	173.00	5.00	0.00	0.00			
54	E	269.90	116.26	2.40	260.00	5.00	0.00	0.00			
55	E	282.49	113.96	2.40	260.00	5.00	0.00	0.00			
56	E	297.51	110.76	2.40	260.00	5.00	0.00	0.00			
57	E	311.27	108.66	2.40	260.00	5.00	0.00	0.00			
58	E	324.16	106.02	2.40	260.00	5.00	0.00	0.00			
59	C	349.95	107.78	5.00	259.00	5.00	0.00	0.00			
60	C	371.89	102.48	5.00	95.00	5.00	0.00	0.00			
61	D	390.94	106.64	5.00	265.00	5.00	0.00	0.00			
62	C	400.16	106.98	5.00	264.00	5.00	0.00	0.00			
63	C	404.70	115.60	5.00	163.00	5.00	0.00	0.00			
64	C	405.96	135.80	5.00	172.00	5.00	0.00	0.00			
65	C	394.36	148.09	5.00	251.00	5.00	0.00	0.00			
66	E	162.50	136.20	2.40	77.00	5.00	0.00	0.00			
67	E	207.84	159.86	2.40	260.00	5.00	0.00	0.00			
68	E	242.39	120.12	2.40	88.00	5.00	0.00	0.00			
69	A	261.97	146.91	6.00	109.00	5.00	0.00	0.00			
70	A	256.78	217.34	6.00	75.00	5.00	0.00	0.00			
71	A	294.99	211.60	6.00	78.00	5.00	0.00	0.00			
72	C	297.36	162.63	5.00	315.00	5.00	0.00	0.00			

Layout Continued

ID /Mast	Type	X	Y	Height	Angle	Tilt	Cant	Out-reach	Target X	Target Y	Target Z
73	E	337.96	104.39	2.40	260.00	5.00	0.00	0.00			
74	A	369.02	214.59	6.00	261.00	5.00	0.00	0.00			
75	E	343.52	132.81	2.40	167.00	5.00	0.00	0.00			
76	C	345.33	152.71	5.00	348.00	5.00	0.00	0.00			
77	C	370.66	147.23	5.00	348.00	5.00	0.00	0.00			
78	C	309.11	168.12	5.00	49.00	5.00	0.00	0.00			
79	C	193.39	164.73	5.00	357.00	5.00	0.00	0.00			
80	C	284.25	147.86	5.00	348.00	5.00	0.00	0.00			
81	C	218.77	167.73	5.00	63.00	5.00	0.00	0.00			
82	E	179.92	201.64	2.40	92.00	5.00	0.00	0.00			
83	E	229.84	157.36	2.40	223.00	5.00	0.00	0.00			
84	C	375.94	172.92	5.00	348.00	5.00	0.00	0.00			
85	E	142.68	223.81	2.40	273.00	5.00	0.00	0.00			
86	E	170.30	225.34	2.40	279.00	5.00	0.00	0.00			
87	E	156.06	224.64	2.40	276.00	5.00	0.00	0.00			
88	E	129.70	222.98	2.40	274.00	5.00	0.00	0.00			
89	E	177.47	226.44	2.40	333.00	5.00	0.00	0.00			
90/1	A	409.30	168.94	6.00	130.00	0.00	0.00	1.00			
91/1	A	409.30	168.94	6.00	265.00	0.00	0.00	1.00			

Horizontal Illuminance (lux)

Overall Site



Results

Eav	9.48
Emin	0.90
Emax	32.91
Emin/Emax	0.03
Emin/Eav	0.10

Horizontal Illuminance (lux)

Southern Quarter



Results

Eav	10.90
Emin	2.35
E _{max}	30.73
E _{min} /E _{max}	0.08
E _{min} /E _{av}	0.22

Horizontal Illuminance (lux)

Mid Southern Quarter

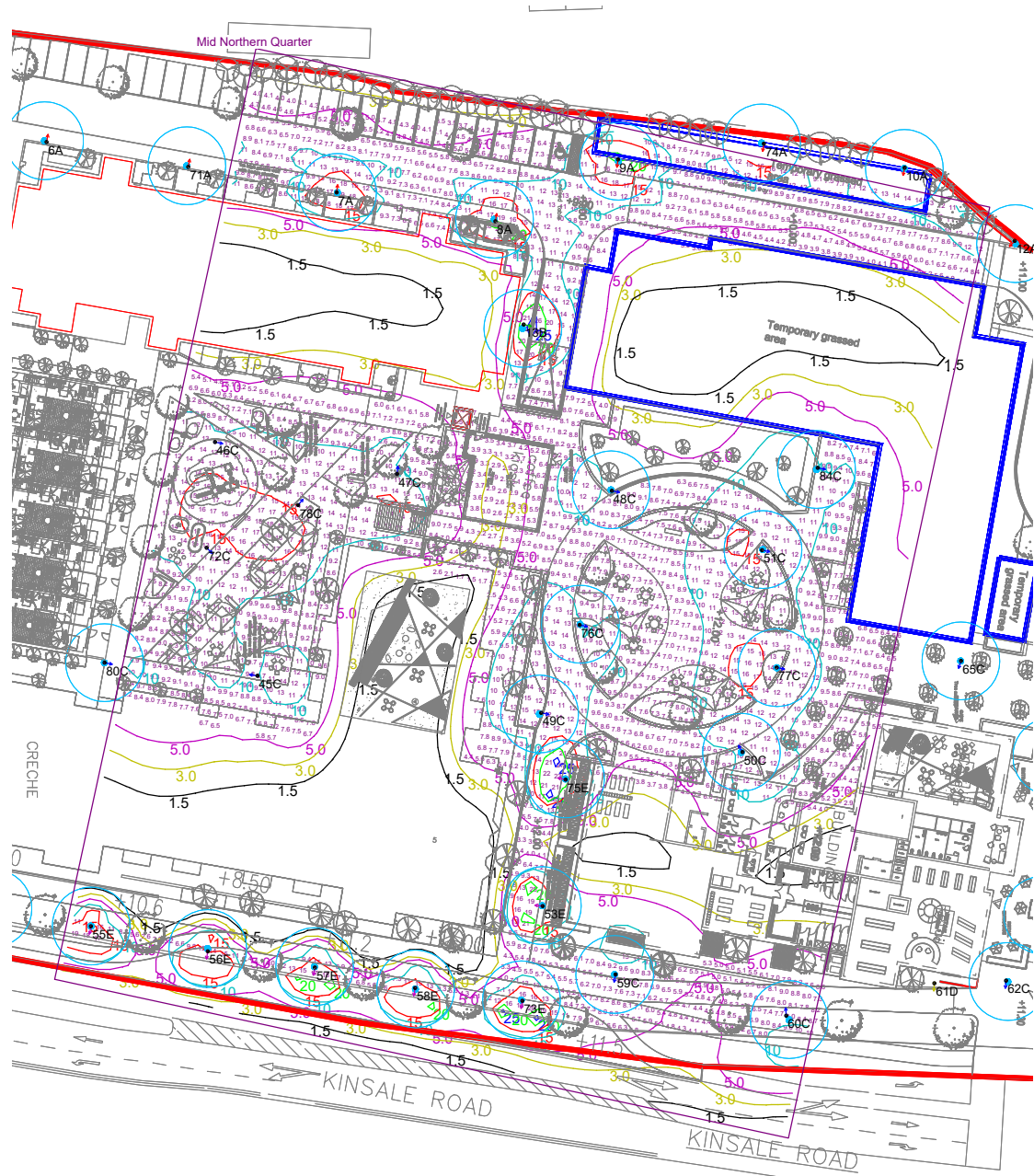


Results

Eav	9.23
Emin	0.74
Emax	28.90
Emin/Emax	0.03
Emin/Eav	0.08

Horizontal Illuminance (lux)

Mid Northern Quarter

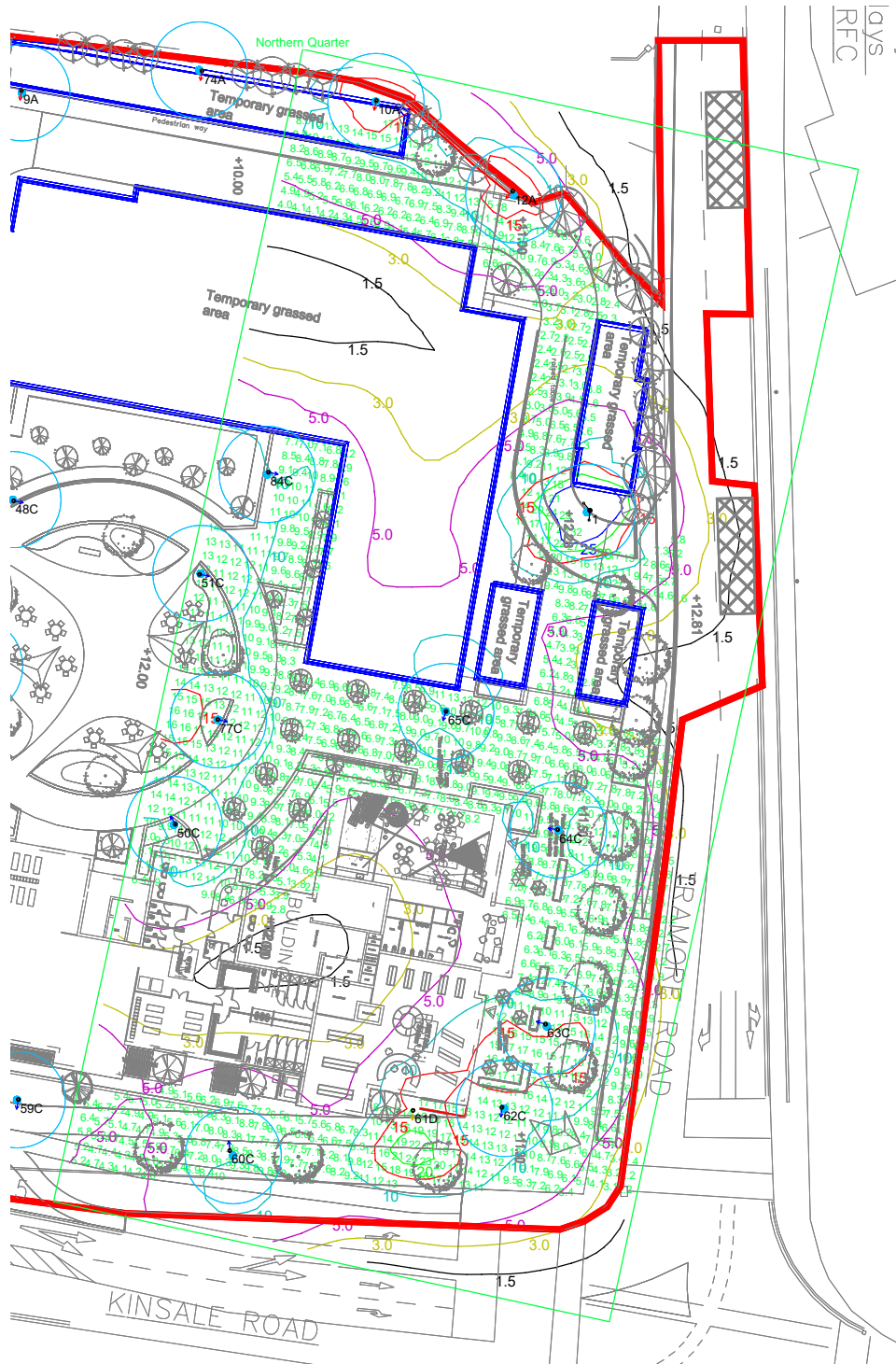


Results

Eav	9.41
Emin	1.48
Emax	28.34
Emin/Emax	0.05
Emin/Eav	0.16

Horizontal Illuminance (lux)

Northern Quarter



Results

Eav	8.92
Emin	2.00
Emax	31.82
Emin/Emax	0.06
Emin/Eav	0.22